

FireClass Addressable Base and Ancillaries



Product Information

The FireClass range of addressable detector bases and base ancillaries have been designed with the needs of both the installer and end user in mind. The range includes standard and isolator bases, sounder and sounder/beacon bases as well as the unique time saver ceiling tile adaptor.

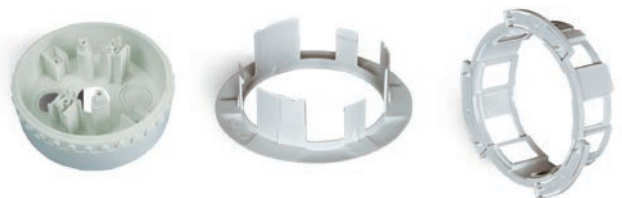
The addressable sounder base and sounder/beacon base feature built-in line isolators, flash rate, tone and volume settings via the panel configuration software which means that either individual, zonal or global changes can be made with a single panel configuration download.

Many of today's buildings feature a false or suspended ceiling. Installation of fire detectors to this type of ceiling has been seen as both difficult and time consuming with the installation requiring the ceiling to be in place before the detector base and associated 2nd fix can take place. By using the new Time Saver Ceiling Tile Adaptor the whole installation process has been made much easier.

The complete process from wiring connection to detector commissioning can now take place as a single operation and be completed even before the ceiling has been installed. The 4B and 4B-I detector bases are designed to snap-fit to the ceiling tile adaptor which can be screw fixed to a ceiling in the traditional manner. An additional adaptor can be used that allows a range of alarm devices to use the Time Saver.

General Features

- Aesthetically discreet
- Superior performance and reliability
- Designed for rapid installation with a Snap-Fit feature
- Remote LED connection
- Optional short circuit isolator in each base
- Addressable loop powered sounder and sounder/beacon bases with built-in line isolators
- Time saver ceiling tile adaptor reduces installation time on suspended ceilings by 30%



A new class of Fire Detection

PRODUCT CODE	TYPE	DESCRIPTION	DIMENSIONS (mm)	WEIGHT (g)	OPERATING TEMPERATURE
517.050.041	4B	Detector Base	109x23.3H	48	-25 - +70 (+90 for short periods)
517.050.043	4B-I	Isolator Base	109x23.3H	60	-25 - +70 (+90 for short periods)
517.050.060	CTA	Time Saver Ceiling Tile Adaptor	165x51.5H	232	-25 - +70 (+90 for short periods)
517.050.058	CTA-AP	Ceiling Tile Adaptor Plate	114.5x7.5H	40	-25 - +70 (+90 for short periods)

PRODUCT CODE	TYPE	DESCRIPTION	DIMENSIONS (mm)	WEIGHT (g)	OPERATING TEMPERATURE
516.800.710	430SB	Loop Powered Ancillary Sounder Base	110x37.5H	186	-25-+70
516.800.757	430LPSB	Loop Powered Sounder Base	115x36.5H	160	-25 - +70
516.800.758	430LPASB	Loop Powered Sounder/ Beacon Base	115x36.5H	190	-25 - +70

PRODUCT CODE	TYPE	CURRENT @ 60/70dBA	CURRENT @ 80/90dBA	NUMBER OF TONES AVAILABLE
516.800.710	430SB	1.2mA	6.8mA	8
516.800.757	430LPSB	2.6mA	4.4mA	16
516.800.757	430LPASB	5.7mA @ 0.5Hz Flash 6.8mA @ 1Hz Flash	7.5mA @ 0.5Hz Flash 8.6mA @ 1Hz Flash	16