

What is the FireClass Console Multi Account Engine feature?

- FireClass Console Multi Account Engine (FC MAE) is the newest FireClass feature that allows users to monitor multiple FireClass systems spread across the world.
- It manages up to 32 FC500 series panels (FC501, FC510, FC520) connected via Ethernet through the FC500IP3 module, showing their real time status and alerting the operator once an event occurs in one of the monitored systems.










Who benefits from FC MAE?

- Property owners can monitor the status of different sites (shops, offices, warehouses, etc) spread across different cities or countries from a single workstation.
- Fire Alarm Monitoring Centres can use the FC MAE as standalone software or in addition to their current way of monitoring fire detection installations via standard protocols (SIA and Contact ID) through the PSTN interface and telephone line.
- Maintenance Companies can use FC MAE to be notified about any fault that occurs in order to provide a quick service.

How does FC MAE work?

FC MAE software needs to be installed in a Microsoft Windows workstation, connected to the Ethernet network. The FC500 series panels to be monitored by the FC MAE need to be connected via IP to the Ethernet as well.

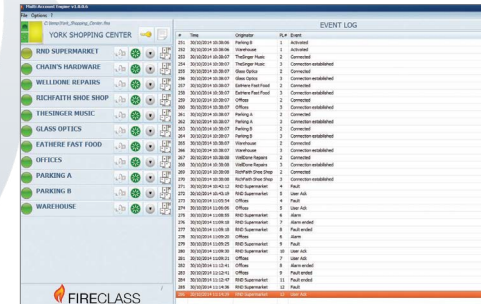
The panels status are polled at a rate configurable by the user and they are shown in a “traffic light” style indicator – as shown in the picture below, in the MAE user interface.

	The monitoring is not active for the panel.
	The monitoring is active, but there is no Ethernet connection active with the panel.
	No troubles on the panel.
	Disabled parts are present on the panel.
	Faults are present on the panel.
	Warnings are present on the panel.
	(Pre)Alarms are present on the panel.

Status indicators color

The overall status indicators provide an immediate update on the status of the monitoring connection, alerting the user if the connection is lost. It also gives priority to the status events so the most critical is always available to be seen by the operator

All the events are logged in a single log file on the FC MAE workstation and are tagged using the workstation time reference. Name of the system site and type of event are shown as well.



Screenshot of FC MAE user interface

Full systems monitoring and control



If the FC MAE is minimized or if another application hides the FC MAE user interface on the workstation, a new relevant event on the FC MAE would allow a popup and is shown over another application window and an audible sound will be emitted to alert the operator. This makes sure that all events are clearly notified to the user.

All data shown on Ethernet can be encrypted assuring the full protection of the information. By the easy integration with the FireClass Console and FireClass 500 Console, FC MAE allows the display of graphical maps of any of the FireClass systems monitored. By entering a user password detailed operations such as silence, reset, evacuate can be performed remotely. The user is also able to enable/disable any point in the systems and to visualize any panel event log. A complementary feature of the FireClass Console graphic software allows an IP camera to be linked to a detector, callpoint or ancillary module within the system in order to see in real time what is occurring.



Features

- Remote management via Ethernet
- Monitors up to 32 FC500 Series panels (FC501/510/520)
- Pop-up and audio notification on new events
- Traffic light style indicators for panels status
- Overall system status indicator
- Integrated with FireClass Console and FireClass 500 Console software
- Quick link to the FireClass graphic maps
- Single log file for the whole monitored system
- Data encryption by AES128

Product Code

557.202.726 FC MAE – FC500 panels monitoring software



www.fireclass.net