

[Terms & Conditions](#)
© 2015 Tane Alarm Products

[Print](#) [Close](#)



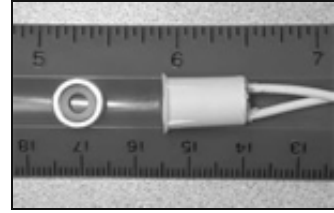
Recessed Contacts

MINI-10 DM - Mini Recess with 1/8" Tight Fit Magnet

GAP: 3/8"

Contact: 3/8" x 9/16" Mini

Magnet: 3/8" x 1/8"



- The Mini-10 DM is ideal where not only the magnet is tight for space, but also where the contact must be smaller
- Tane's 3/8" x 1/8" powerful magnet has a convex hole drilled so a flat head screw fits flush!
- 12" leads std. Longer leads available.

FOR VERY WIDE GAP:

Use Bare 3/8" x 3/4" Magnet

Part Number MINI - 10 WG

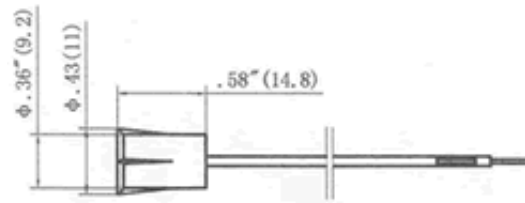
GAP: 1"

Product Specifications

Magnet Assembly



Contact Assembly



[Terms & Conditions](#)
© 2015 Tane Alarm Products

[Print](#) [Close](#)