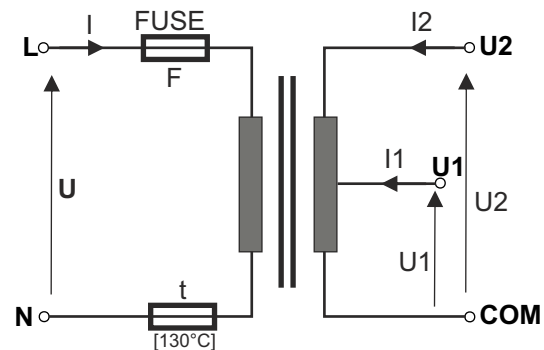
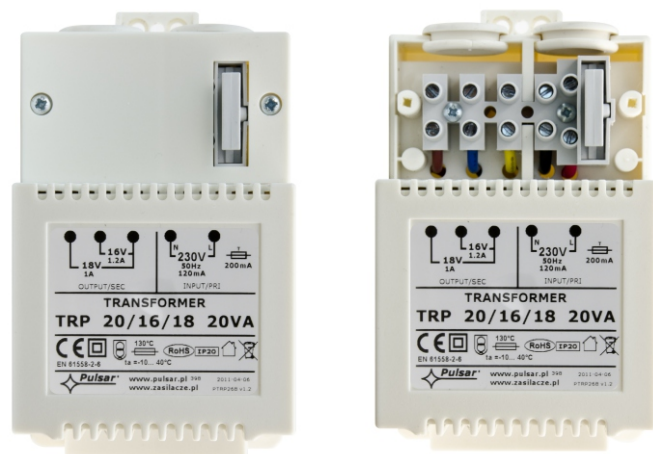


CODE: **AWT 050** v1.3/VII  
 NAME: **TRANSFORMER TRP 20/16/18**



**Tab.1**

Technical parameters of transformers							
CODE NAME	S	U	I	U1 or U2	I1 or I2	F	t
AWT050 TRP 20/16/18	20VA	230V/AC	0,12A	16V or 18V	1,2A or 1,0A	T 200mA/250V	130°C

### USE:

The transformers are destined for supplying devices requiring AC voltage U1 or U2 .

### TECHNICAL DATA

<b>Casing:</b>	PC/ABS in class UL 94 V-0, IP20
<b>Dimensions:</b>	Fig. 1 TRP 20VA
<b>Net/ gross weight:</b>	0,67kg / 0,72kg [+/-0,1kg] TRP 20VA
<b>Installation:</b>	installation bus TH/TS35 (DIN) or cheese screw x 4 (flat surface), with the adaptors AWO466 for TRP20VA
<b>Supply voltage:</b>	230 V/AC (-15%+10%), 50Hz
<b>Current consumption I:</b>	tab.1.
<b>Output voltage U1 or U2:</b>	tab.1.
<b>Rated power S:</b>	tab.1.
<b>Rated output current I1 or I2:</b>	tab.1.
<b>Short-circuit protection F:</b>	fuse tab.1.
<b>Over-load protection t:</b>	fuse tab.1. / temperature limit fuse 130°C-non resetable
<b>Operating conditions:</b>	2nd environmental class, -10°C+ 40°C, Ta 40 B
<b>Certificates, declarations:</b>	CE, RoHS, 2 year from the production date
<b>Remarks:</b>	leads on connectors AWG 24-12 2,5mm <sup>2</sup> , screw 2,9 x 9,5 - 4pcs.

Dimensions of transformers series: TRP 20VA

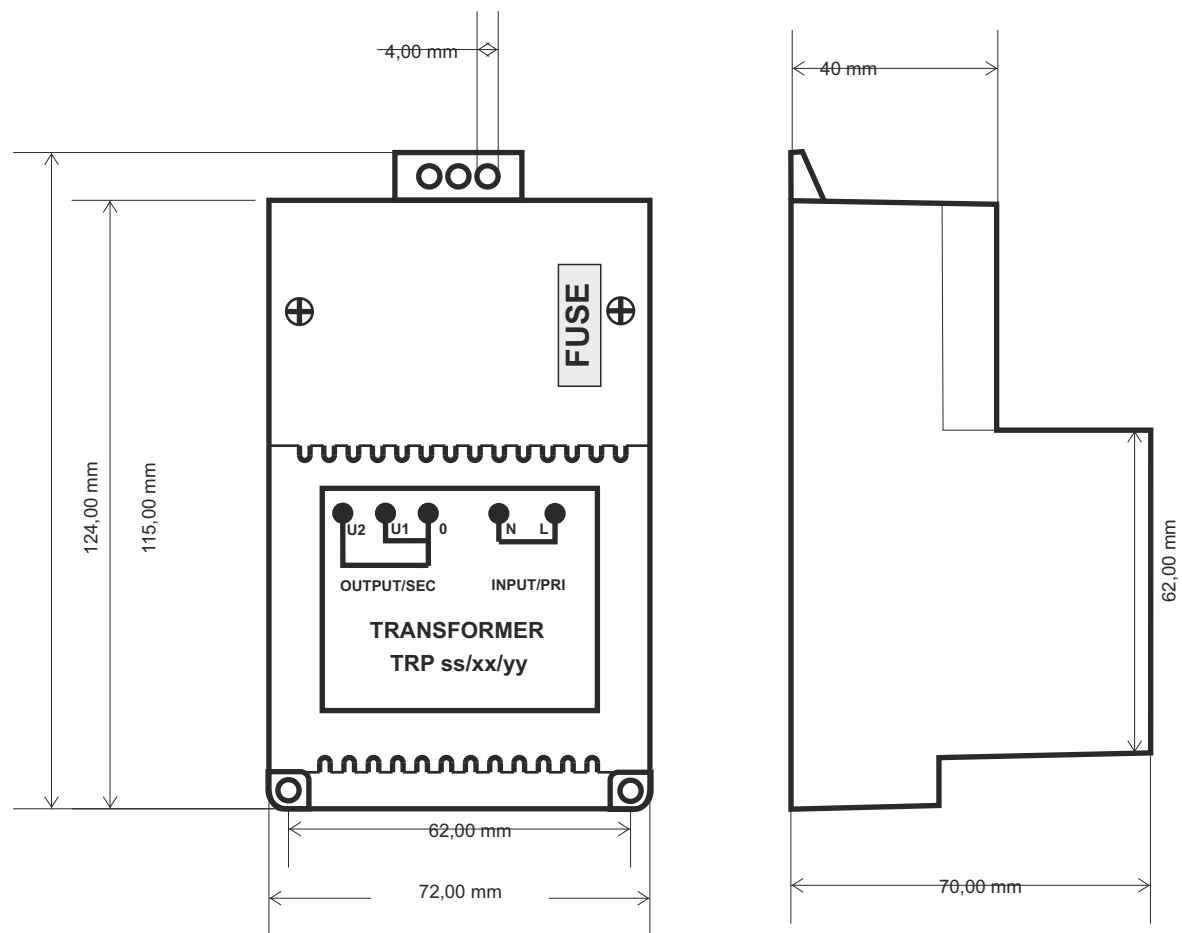


Fig.1